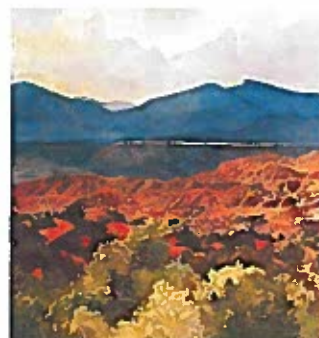


Joan Foth

**Art Goes to School of Delaware Valley
Portfolio Print Summary**

Artist: Joan Foth
Nationality: American
Birth/Death: 1930-2010
Period/Style: Realism, Naturalist
Title of Work: High Road IV
Year: 1996
Size: 18.25" x 17.25"
Medium: Poster
Location: N/A

THE SANTA FE OPERA



FORTIETH SEASON
 FROM THE 40TH ANNIVERSARY POSTER FOR THE SANTA FE OPERA

Biographical highlights:

A native of upstate New York and then a resident of Kansas and New Mexico, Foth is noted for her panoramic watercolor landscapes. She graduated from the High School of Music and Art in New York City and earned a BA in Art History and Oriental Studies from Barnard. After working for a year as a lecturer for the Metropolitan Museum of Art, she moved to Kansas with her husband and secured a job in 1954 as Assistant Director of the Kansas Museum of History. In 1958, she was hired as Adjunct Professor by the Washburn University Art Department, where she taught life drawing and watercolor for the next 25 years. Foth received many awards including selection as the first Kansas artist to participate in the National Endowment for the Arts Artist in the Schools program in 1970, the Kansas Governors Artist Award in 1983, and an honorary Doctor of Fine Arts at Washburn in 1998. She began painting the New Mexico landscape in the late 1970s and in 1990 moved to the Santa Fe area. Her work was featured in museums including the National Museum of Women in the Arts in Washington, DC, Southwest Art and other regional magazines, and on the 40th anniversary poster for the Santa Fe Opera.

Other works by artist: Rose skirted mountain, watercolor, was recently acquired by Washburn University's Mulvane Art Museum in Topeka.



Interpretation: Serene setting in harsh desert environment. Broad brush strokes in foreground give impression of foliage and foothills.

Compare and Contrast: Other landscapes (Sargent and El Greco) mountains in Ming Dynasty print.

Presentation Ideas: Why do you think the Santa Fe Opera chose this landscape for its poster? Where is the artist standing? How does the landscape/colors compare with your community? How have humans shaped the view?

Selected References:

<http://www.askart.com/AskART/artists/search/ArtistKeywords.aspx?artist=109492>
<http://www.legacy.com/obituaries/cjonline/obituary.aspx?n=joan-b-foth&pid=144325091>
<http://www.washburn.edu/about/community/mulvane-art-museum/collection/recent-acquisitions.html>
Who's Who in American Art 1989-90, 18th edition, page 345.